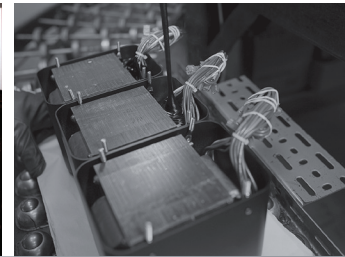


MA8000 integrated amplifier

- High power, 300 watt per channel stereo amplifier - enough power to properly run any speaker type.
- Analog eight band tone control allows for precision adjustment so your recordings sound their best.
- Moving Coil and Moving Magnet phono inputs feature adjustable cartridge loading and impedance matching, assuring every turntable gives its optimal performance when played through the MA8000.
- Five digital inputs allow the McIntosh Digital Engine to decode your digital music at up to 32 bits and 192kHz for maximum analog fidelity and enjoyment.
- The Home Theater Passthru feature allows for seamless integration of multi-channel systems with the MA8000's power and precision sound.
- The High Drive headphone amplifier will match any headphones between 20 and 600 ohms, allowing for the ultimate personal listening experience.



Monumental Performance

McIntosh®

LEGENDARY PERFORMANCE™

www.mcintoshlabs.com

MA8000 integrated amplifier

Amplifier Power Output:

300 watts per channel with both channels operating into 2, 4 or 8 Ohms, with Power Meters

Total Harmonic Distortion:

0.005% maximum from 20Hz to 20kHz

Preamplifier Inputs:

Six high level unbalanced
Two high level balanced
Two Phono: one Moving Coil and one Moving Magnet (both adjustable loading)
Five digital inputs

Digital Section:

Five digital inputs: one dedicated USB, and four assignable: two coax and two optical PCM
McIntosh Digital Engine is 32 bit 192kHz, USB 2.0 asynchronous

Tone Controls:

Discrete/manual/analog eight band EQ

High Drive Headphone Amplifier:

All headphones, from 20 to 600 Ohms

Home Theater Pass Through:

Allows interfacing with a Home Theater system

Overall Dimensions (W x H x D):

17-1/2" (44.5cm) x 9-7/16" (24 cm) x 22" (55.88cm) including knobs, connectors and cables

Weight:

100 lbs (45.4kg) net,
133 lbs (60.3kg) in shipping carton



For the Consumer's Protection:

In order to ensure the highest level of customer satisfaction, "new" McIntosh products may only be purchased over-the-counter or delivered and installed by an Authorized McIntosh Dealer. McIntosh products that are purchased over the Internet, by phone or mail order are presumed to be "used" and do not qualify for any McIntosh Warranty. McIntosh does not warrant, in any way, products that are purchased from anyone who is not an Authorized Dealer or products that have had their serial number altered or defaced.



Companion Products

The McIntosh MR88 AM/FM/HD Tuner, MCD500 SACD/CD Player, MT10 Turntable, XR200 Loudspeakers, MEN220 Room Correction System and MPC1500 Power Controller are logical companions for the MA8000 Integrated Amplifier. Your Authorized Dealer can provide additional information on other McIntosh product combinations.

To learn more, please call us at 1.800.538.6576.

McIntosh®

LEGENDARY PERFORMANCE™

www.mcintoshlabs.com