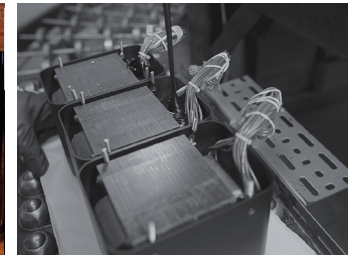


MC205 power amplifier

- MC205 is a powerful amplifier conservatively rated 200 watts for each of the five channels.
- Massively over built amplifier design does not require cooling fans so the most subtle film soundtracks are not masked by common amplifier fan noise.
- Precision McIntosh Power Watt Meters allow monitoring of the primary front sound stage while clever engineering matches the output of MC205 with all speaker types.
- MC205 may be combined with a stereo amplifier to complete a five channel home theater plus two channel remote zone.



McIntosh five channel theater power house.

McIntosh[®]

LEGENDARY PERFORMANCE™

www.mcintoshlabs.com

MC205 power amplifier

Power Output

Minimum sine wave continuous average power output per channel, all channels operating is: 200 watts into a 4 ohm or 8 ohm load.

Output Load Impedance

8 and 4 ohms

Rated Power Band

20Hz to 20,000Hz

Total Harmonic Distortion

0.005% maximum harmonic distortion at any power level from 250 milliwatts to rated power, 20Hz to 20,000Hz.

Overall Dimensions

Width is 17-1/2" (44.45cm)
Height is 9-7/16" (23.97cm) including feet
Depth is 21" (53.3cm) including the front panel and cables

Weight

81 lbs. (44.2 kg) net, 114 lbs. (51.8 kg) in shipping carton

Exclusive McIntosh Power Assurance System

A collection of technologies that enhance performance and reliability while protecting the amplifier and loudspeakers.

Power Guard

A waveform comparison circuit continuously monitors both input and output signals. Power Guard dynamically adjusts the input level to avoid clipping while preventing harsh sounding distortion.

Sentry Monitor

Fuse-less short-circuit protection circuit disengages the output stage before current exceeds safe operating level-resets automatically.



Dynamic Power Manager (DPM)™

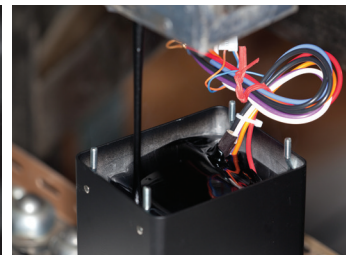
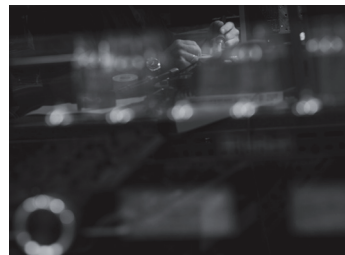
By matching the characteristics of the output stage to 4 or 8 Ohm loudspeakers DPM insures the most efficient power transfer, reduces distortion, and promotes cool operation; with DPM you get all the power you paid for.

Wattmeter

Swift, accurate response reveals program peaks so staying within the power limits of your loudspeakers is easy.

For the Consumer's Protection:

In order to ensure the highest level of customer satisfaction, "new" McIntosh products may only be purchased over-the-counter or delivered and installed by an Authorized McIntosh Dealer. McIntosh products that are purchased over the Internet, by phone or mail order are presumed to be "used" and do not qualify for any McIntosh Warranty. McIntosh does not warrant, in any way, products that are purchased from anyone who is not an Authorized Dealer or products that have had their serial number altered or defaced.



Companion Products

The McIntosh MX150 A/V Control Center, MVP881 BR Audio Video Player, MR88 AM/FM/XM/HD Tuner, MPC1500 Power Controller, XR200 Loudspeaker, XCS200 Center Channel Loudspeaker and the CS100 Ceiling Loudspeaker are logical companions for the MC205 Power Amplifier. Your Authorized Dealer can provide additional information.

To experience the legendary performance of McIntosh, please call on us at 1.800.538.6576.

McIntosh®

LEGENDARY PERFORMANCE™

www.mcintoshlabs.com