

## Wired International seeTouch® Keypads

HomeWorks® QS international seeTouch® keypads provide homeowners with a simple and elegant way to operate lights, shades/draperies, motorized screens, thermostats, and many other devices.

All HomeWorks® QS wired international seeTouch® keypads have two contact closure inputs on the back of the unit which provide independent functions from the front buttons. Some models are available with an infrared (IR) receiver.

HomeWorks® QS international seeTouch® keypads feature large, easy-to-use buttons, plus a unique backlit engraving option that makes the keypads readable any time of the day or night. seeTouch® buttons are rounded, allowing engraving to be displayed at an upward angle, increasing readability.

Replacement Kits are available in a variety of colors and with custom engraving to clearly identify each button's function.

Lutron® wallplates snap on with no visible means of attachment. Multi-gang wallplates sold separately.



HomeWorks® QS wired international seeTouch® keypads are available in many button configurations, shown on the following two pages. They are also available in insert (*above left*) and non-insert (*above right*) styles. The insert style keypad allows for easy ganging. Keypad and Button/Wallplate kits sold separately.

# Wired International seeTouch® Keypads Insert Style

## Model Numbers

### Base Units

|                 |  |
|-----------------|--|
| HQWIS-NB-NONE   | Keypad without Wallplate /Button Kit   |
| HQWIS-NBIR-NONE | IR Keypad without Wallplate/Button Kit |

### Button/Wallplate Kits

|                  |                                  |
|------------------|----------------------------------|
| HWIS-2B-I-XX*    | 2 button                         |
| HWIS-3B-I-XX*    | 3 button                         |
| HWIS-4B-I-XX*    | 4 button                         |
| HWIS-5BRL-I-XX*  | 5 button with Raise/Lower        |
| HWIS-5BIR-I-XX*  | 5 button with Raise/Lower and IR |
| HWIS-6BRL-I-XX*  | 6 button with Raise/Lower        |
| HWIS-7BRL-I-XX*  | 7 button with Raise/Lower        |
| HWIS-8BRL-I-XX*  | 8 button with Raise/Lower        |
| HWIS-8BIR-I-XX*  | 8 button with Raise/Lower and IR |
| HWIS-10BRL-I-XX* | 10 button with Raise/Lower       |

### Replacement Button Kits

|                 |                                  |
|-----------------|----------------------------------|
| SIB-2B-XX*-E    | 2 button                         |
| SIB-3B-XX*-E    | 3 button                         |
| SIB-4B-XX*-E    | 4 button                         |
| SIB-5BRL-XX*-E  | 5 button with Raise/Lower        |
| SIB-5BIR-XX*-E  | 5 button with Raise/Lower and IR |
| SIB-6BRL-XX*-E  | 6 button with Raise/Lower        |
| SIB-7BRL-XX*-E  | 7 button with Raise/Lower        |
| SIB-8BRL-XX*-E  | 8 button with Raise/Lower        |
| SIB-8BIR-XX*-E  | 8 button with Raise/Lower and IR |
| SIB-10BRL-XX*-E | 10 button with Raise/Lower       |



HWIS-2B-I-XX\*



HWIS-3B-I-XX\*



HWIS-4B-I-XX\*



HWIS-5BRL-I-XX\*



HWIS-5BIR-I-XX\*



HWIS-6BRL-I-XX\*



HWIS-7BRL-I-XX\*



HWIS-8BRL-I-XX\*



HWIS-8BIR-I-XX\*



HWIS-10BRL-I-XX\*

### Ordering Example:

HQWIS-NB-NONE (Base Unit) and  
HWIS-2B-I-AW (Wallplate/Button Kit)

\*\*XX" in the model number represents color/finish code.  
See **Colors and Finishes** at end of document.

# Wired International seeTouch® Keypads Non-Insert Style

## Model Numbers

### Base Units

|                 |   |
|-----------------|---|
| HQWIS-NB-NONE   | International seeTouch® without Wallplate or Button Kit         |
| HQWIS-NBIR-NONE | International seeTouch® with IR without Wallplate or Button Kit |

### Button/Faceplate Kits

|                  |   |
|------------------|---|
| HWIS-2B-F-XX*    | 2 button non-insert                         |
| HWIS-3B-F-XX*    | 3 button non-insert                         |
| HWIS-4B-F-XX*    | 4 button non-insert                         |
| HWIS-5BRL-F-XX*  | 5 button non-insert with raise/lower        |
| HWIS-5BIR-F-XX*  | 5 button non-insert with raise/lower and IR |
| HWIS-6BRL-F-XX*  | 6 button non-insert with raise/lower        |
| HWIS-7BRL-F-XX*  | 7 button non-insert with raise/lower        |
| HWIS-8BRL-F-XX*  | 8 button non-insert with raise/lower        |
| HWIS-8BIR-F-XX*  | 8 button non-insert with raise/lower and IR |
| HWIS-10BRL-F-XX* | 10 button non-insert with raise/lower       |

### Replacement Button Kits

|                 |  |
|-----------------|--|
| SIB-2B-XX*-E    | 2 button replacement kit                         |
| SIB-3B-XX*-E    | 3 button replacement kit                         |
| SIB-4B-XX*-E    | 4 button replacement kit                         |
| SIB-5BRL-XX*-E  | 5 button replacement kit with raise/lower        |
| SIB-5BIR-XX*-E  | 5 button replacement kit with raise/lower and IR |
| SIB-6BRL-XX*-E  | 6 button replacement kit with raise/lower        |
| SIB-7BRL-XX*-E  | 7 button replacement kit with raise/lower        |
| SIB-8BRL-XX*-E  | 8 button replacement kit with raise/lower        |
| SIB-8BIR-XX*-E  | 8 button replacement kit with raise/lower and IR |
| SIB-10BRL-XX*-E | 10 button replacement kit with raise/lower       |



HWIS-2B-F-XX\*



HWIS-3B-F-XX\*



HWIS-4B-F-XX\*



HWIS-5BRL-F-XX\*



HWIS-5BIR-F-XX\*



HWIS-6BRL-F-XX\*



HWIS-7BRL-F-XX\*



HWIS-8BRL-F-XX\*



HWIS-8BIR-F-XX\*



HWIS-10BRL-F-XX\*


### Ordering Example:

HQWIS-NB-NONE (for base unit) plus  
HWIS-2B-F-AW (for button/faceplate kit)

\*\*XX\* in the model number represents color/finish code.  
See **Colors and Finishes** at end of document.

# Wired International seeTouch® Keypads

## Specifications

|                                  |   |
|----------------------------------|---|
| <b>Model Numbers</b>             | See pages 2 and 3 for complete lists of model numbers.  |
| <b>Power</b>                     | 24–36 V $\overline{=}$ 30 mA  |
| <b>Typical Power Consumption</b> | 0.6 W; 1 Power Draw Unit (PDU)<br>Test conditions: all backlights on medium intensity, two LEDs on (two presets active), keypad powered at 24 V $\overline{=}$  |
| <b>Regulatory Approvals</b>      | CE,  C-tick, UL, cUL   |
| <b>Environment</b>               | Ambient operating temperature: 0 °C to 40 °C (32 °F to 104 °F), 0% to 90% humidity, non-condensing. Indoor use only.  |
| <b>Communications</b>            | Connects to QS wired device link on Homeworks® QS processor.  |
| <b>ESD Protection</b>            | Tested to withstand 15 kV electrostatic discharge without damage or memory loss, in accordance with IEC 801-2.  |
| <b>Power Failure</b>             | Power failure memory: should power be interrupted, the keypad will return to its previous state when power is restored.   |
| <b>Mounting</b>                  | EBB-15 RD (Round wallbox) 71 mm diameter x 61 mm deep or EBB-15 SQ (Square wallbox) 71 mm wide x 71 mm high x 47 mm deep.   |
| <b>Wiring</b>                    | Control wire must be 1 pair 1.0 mm <sup>2</sup> (18 AWG) SELV/PELV/NEC® Class 2 for power and 1 pair 0.5 mm <sup>2</sup> to 1.0 mm <sup>2</sup> (22 AWG to 18 AWG) SELV/PELV/NEC® Class 2 twisted/shielded for data (see <b>Wiring</b> ). |
| <b>Warranty</b>                  | <a href="http://www.lutron.com/TechnicalDocumentLibrary/Intl_Warranty.pdf">www.lutron.com/TechnicalDocumentLibrary/Intl_Warranty.pdf</a>  |

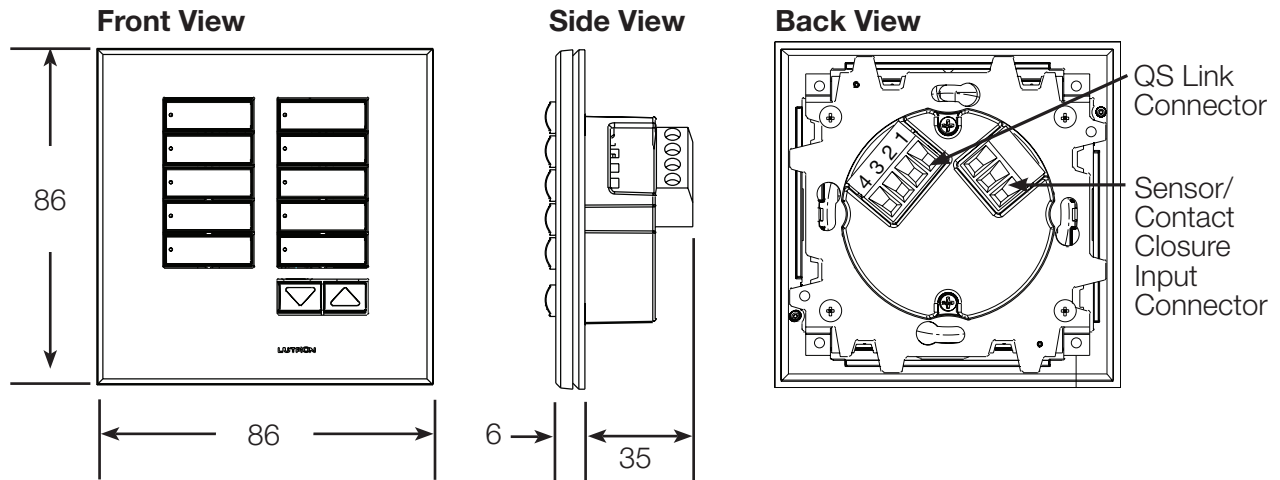
## Design Features

- Green status LEDs.
- Backlit button/engraving.
- Field-changeable Button/Wallplate Kits allow for easy customization.
- All terminal block inputs are over-voltage and miswire-protected against wire reversals and shorts.
- Available as an insert style control for multi-gang.
- Lutron® wallplates snap on with no visible means of attachment.
- Use Replacement Kits to change color, button configuration, engraving, or to convert between insert and non-insert style configurations.

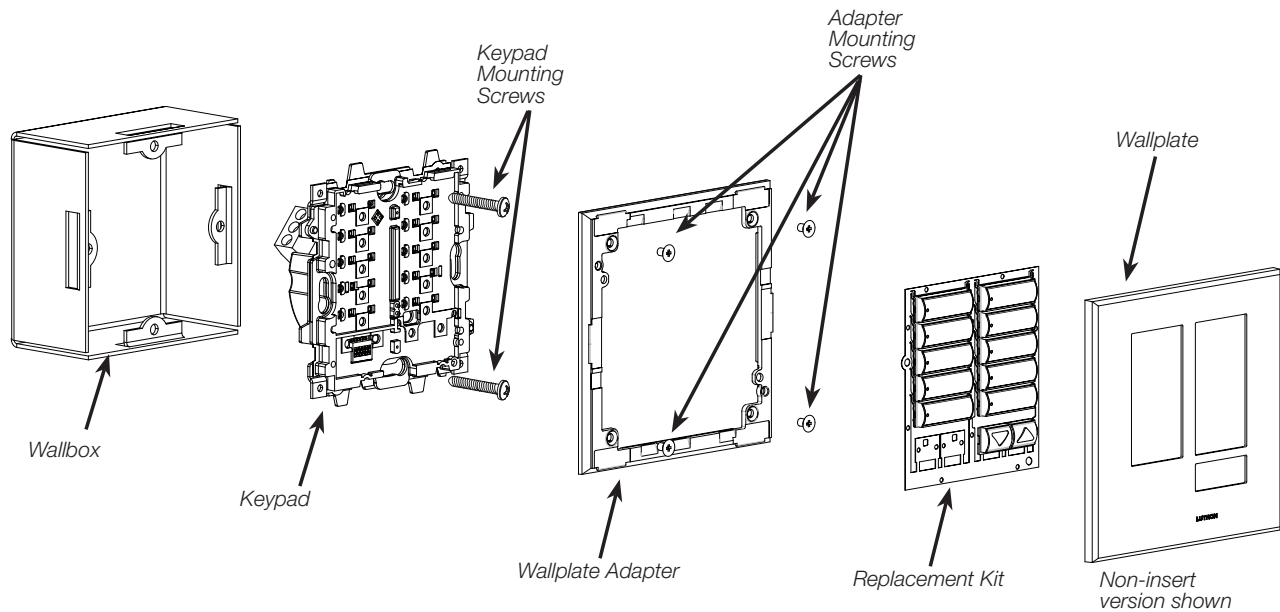
# Wired International seeTouch® Keypads

## Dimensions

All dimensions are shown as mm

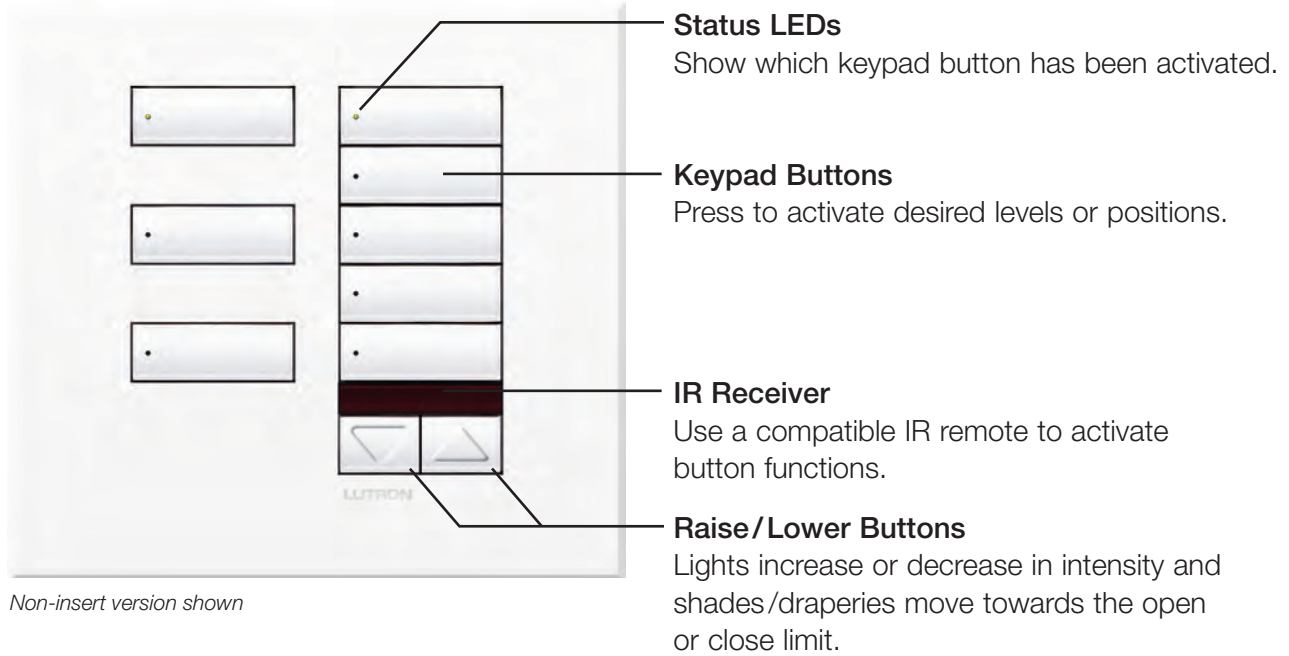


## Mounting and Parts Identification



# Wired International seeTouch<sup>®</sup> Keypads

## Operation



*Non-insert version shown*

# Wired International seeTouch® Keypads

## Wiring

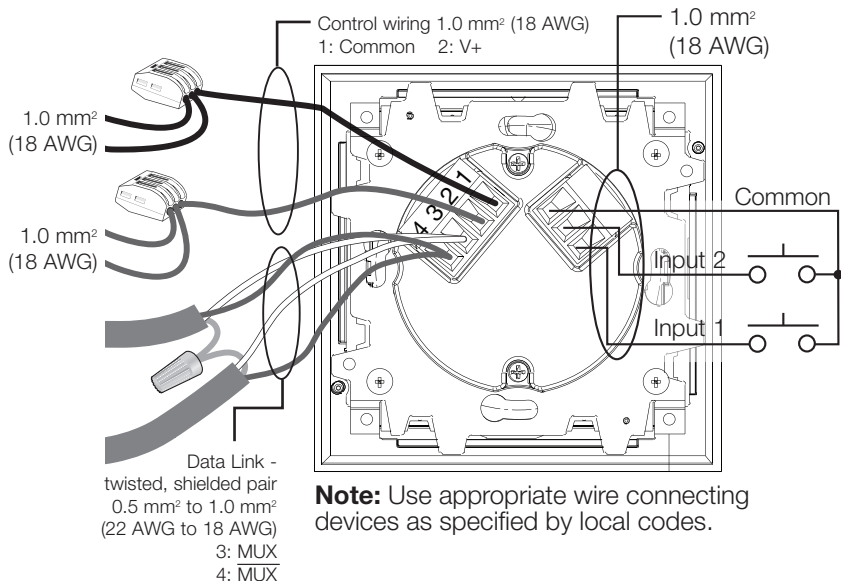
### Control Link

- Keypad wiring may be in a daisy-chain, star or T-tap configuration.
- The total length of wire on a QS wired link is not to exceed 610 m.
- Up to 100 devices can be connected to the QS wired link. This can include wired international seeTouch® keypads along with other devices as defined in the HomeWorks® QS software.
- An external power supply may be required depending on the total current draw of all wired devices on the processor link.
- Make connections inside the wallbox or in a switch/junction box with a maximum wire length of 2.5 m from the link to the Keypad.
- Two 1.0 mm<sup>2</sup> (18 AWG) conductors for common (terminal 1) and V+ (terminal 2). These will not fit in terminals. Connect as shown.
- One shielded, twisted pair 0.5 mm<sup>2</sup> to 1.0 mm<sup>2</sup> (22 AWG to 18 AWG) for data link (terminals 3 and 4).
- Connect Drain/Shield as shown. Do not connect to Ground (Earth) or Wallstation. Connect the bare drain wires and cut off the outside shield.

### Wiring to Control Link

SELV/PELV/NEC® Class 2 control wiring: 1.0 mm<sup>2</sup> (18 AWG)

Data link: twisted, shielded pair 0.5 to 1.0 mm<sup>2</sup> (22 AWG to 18 AWG)



### Contact Closure Input

- Inputs must be dry contact closure, solid-state, open collector, or active-low (NPN)/active-high (PNP) output.
  - Open collector NPN or active-low on-state voltage must be less than 2 V<sub>DC</sub> and sink 3.0 mA
  - Open collector PNP or active-high on-state voltage must be greater than 12 V<sub>DC</sub> and source 3.0 mA
- Keypad is miswire protected up to 36 V<sub>DC</sub>.
- Outputs must stay in the closed or open states for at least 40 msec in order to be recognized by the Keypad.



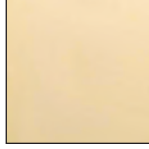
# Wired International seeTouch® Keypads

## Colors and Finishes

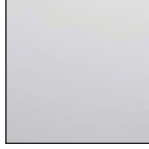
### Architectural Metal Finishes (wallplates only)



Satin Brass  
SB



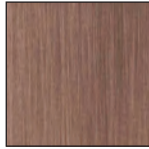
Bright Brass  
BB



Bright Chrome  
BC



Antique Brass  
QB



Antique Bronze  
QZ



Satin Chrome  
SC



Satin Nickel  
SN



Bright Nickel  
BN



Gold  
AU

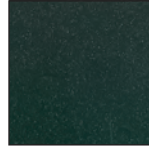
### Architectural Matte Finishes



Arctic White  
AW



Argentum  
AR



Mica  
MC

- Due to printing limitations, colors and finishes shown cannot be guaranteed to perfectly match actual product colors.
- Color chip portfolios and keychains are available for more precise color matching.

Architectural Metal portfolio           AMTL-CK-1  
Architectural Matte keychain           AM-CK-1