



### DESIGN HIGHLIGHTS

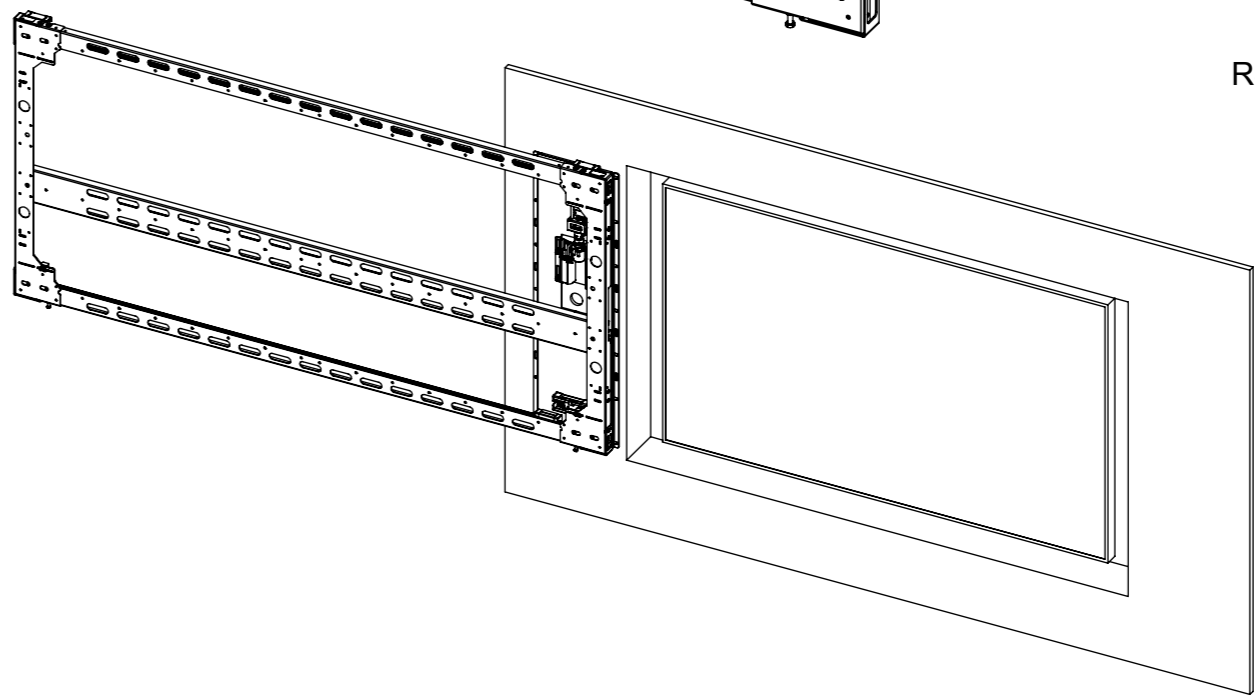
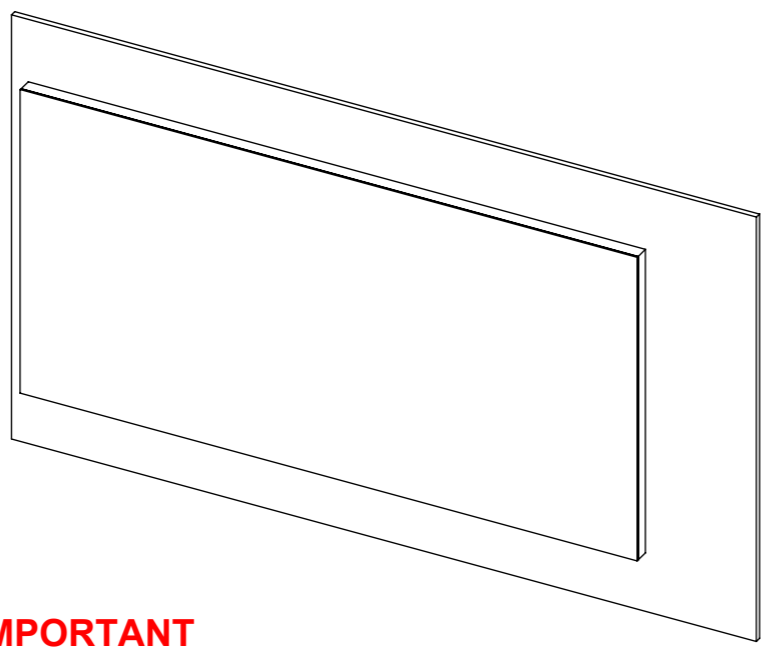
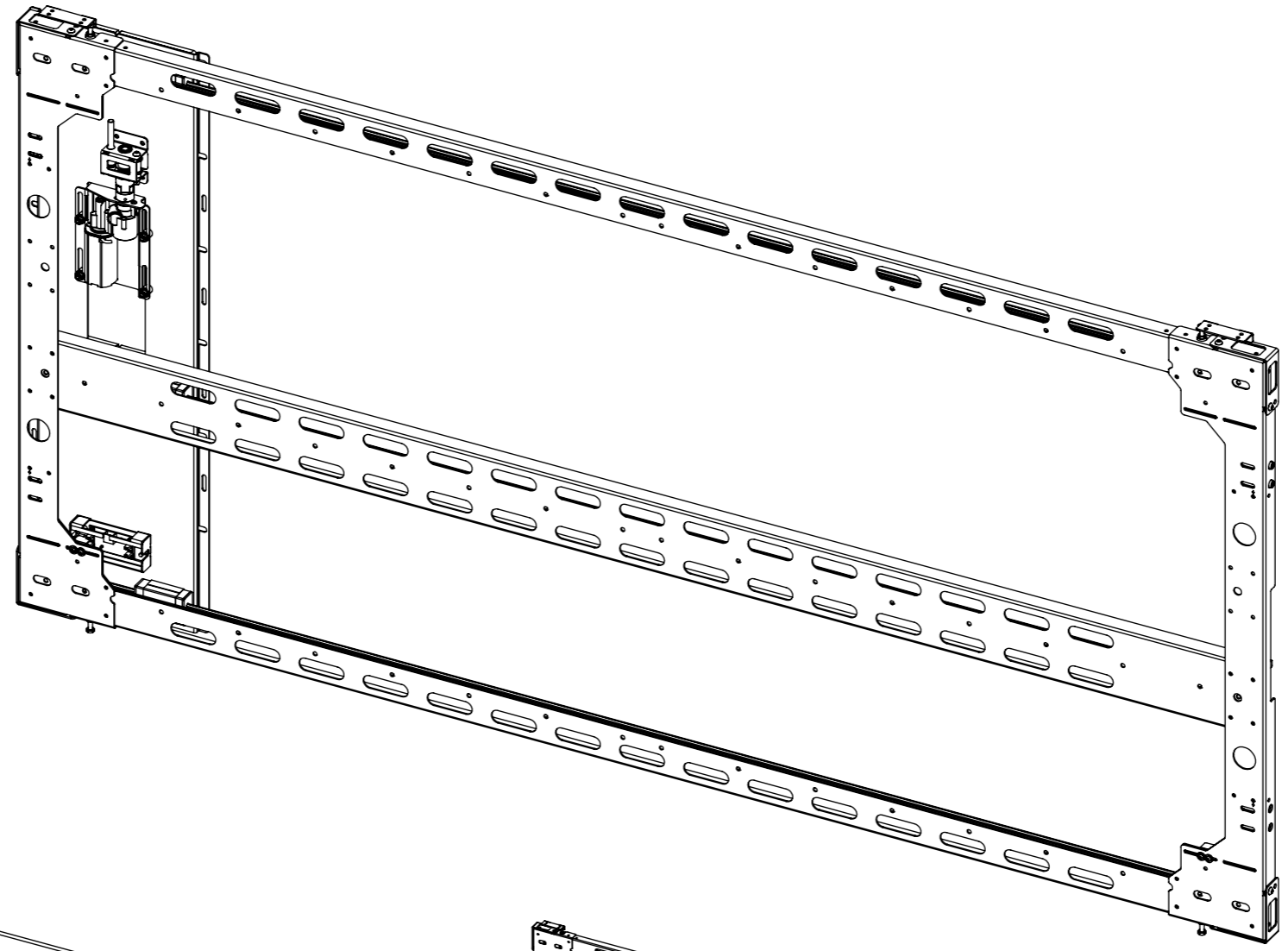
- Quiet, smooth action with a 'ramped' start and finish motion profile
- Surface mounted design for simplified installation
- Vibration isolated components
- Easy adjustment of mechanism end stops
- Sophisticated electronics help prevent 'finger trapping'

### OPTIONS

- Other size mechanisms (for screens between 42" and 55") are available

### NOTE

- All dimensions are measured in mm [in].



### FUNCTION

This mechanism will open a panel to reveal a screen behind. The mechanism could be used to reveal any recessed item, such as a safe or hi-fi equipment.

### SUITABILITY

This technical sheet is for the smallest version of the mechanism. It is typically suitable for screens up to 65". See recess size for restrictions.

### SPECIFYING

The mechanism requires the screen to be recessed into the wall.

Maximum panel weight is 10kg [22.0lb].

### CONTROL

Supplied with basic infrared remote. Can be learnt by many learning remotes.

Also has switch control and RS232 so can be operated by relays, switches, Crestron / AMX or Lutron systems.

### WARNING

**It is the responsibility of the installer to warn all potential end users of the dangers of interfering with mechanisms during operation**

### IMPORTANT

**Mechanisms which lift or move weights need to be checked on a yearly basis for any damage which may result in an accident**



## Recess Details

### CABLES:

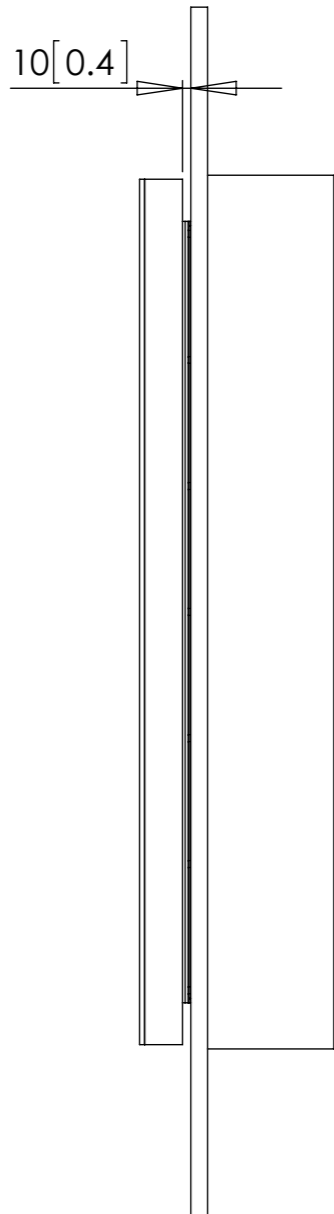
During installation, cables from the mechanism shall be required to run to a suitable storage location; connecting to the control box (200[7.9] x 150[5.9] x 50[2.0]).

A nominal  $\phi 40\text{mm}[1.6]$  cable entry/exit hole is recommended to provide suitable access for cable routing.

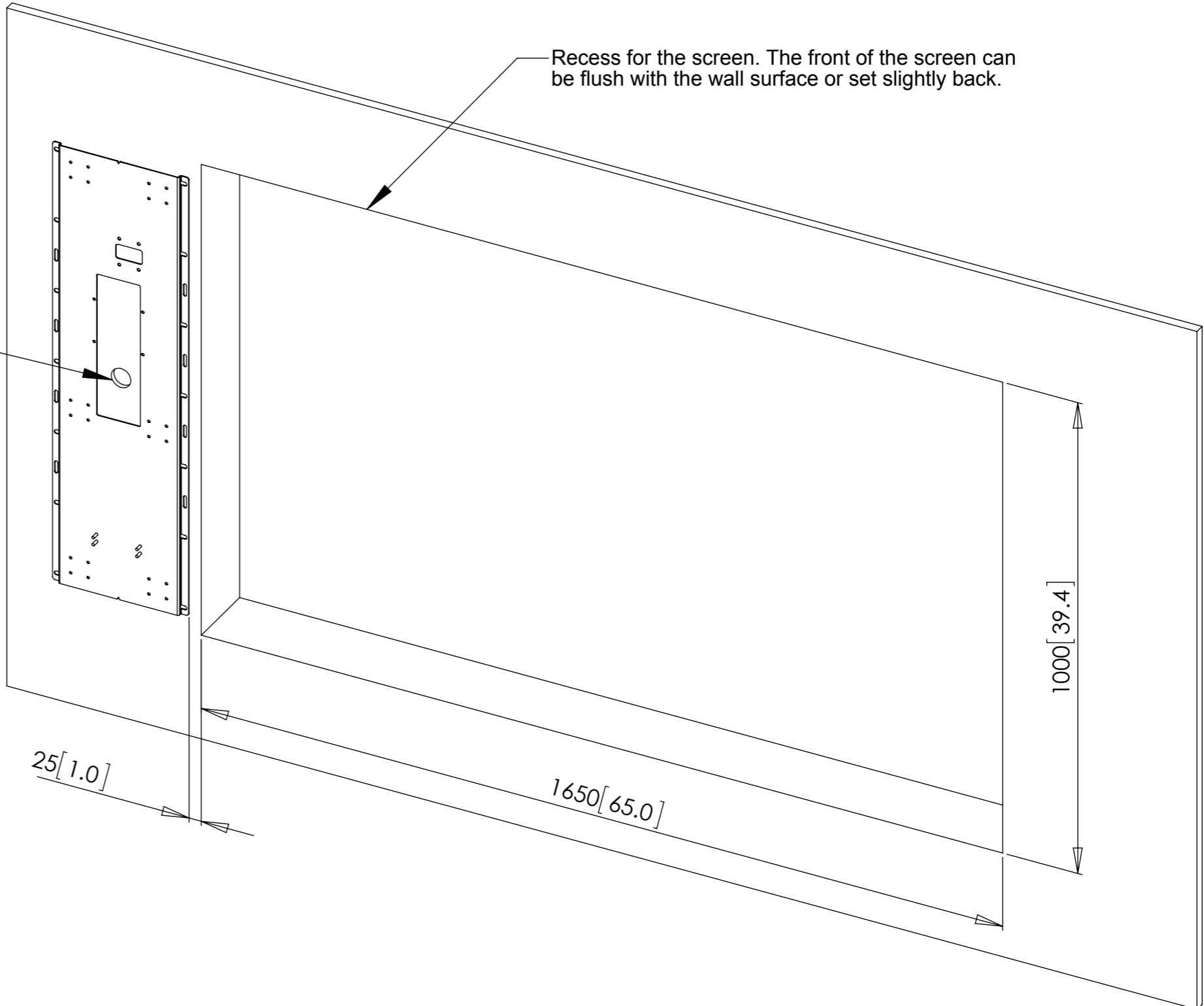
The control box shall need to be connected into a mains (13A) plug socket. An infrared receiver on a 1.5m[59.1] lead is also plugged into the control box.

### PANEL:

The moving panel shall be 10mm[0.4] proud of the wall surface.

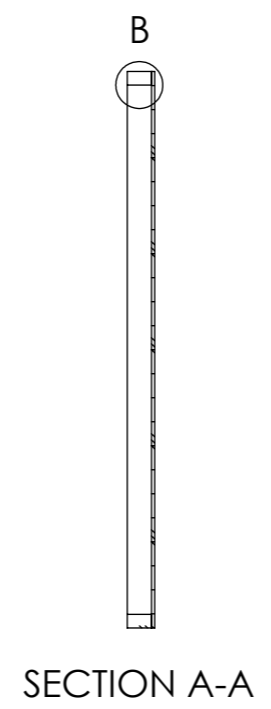
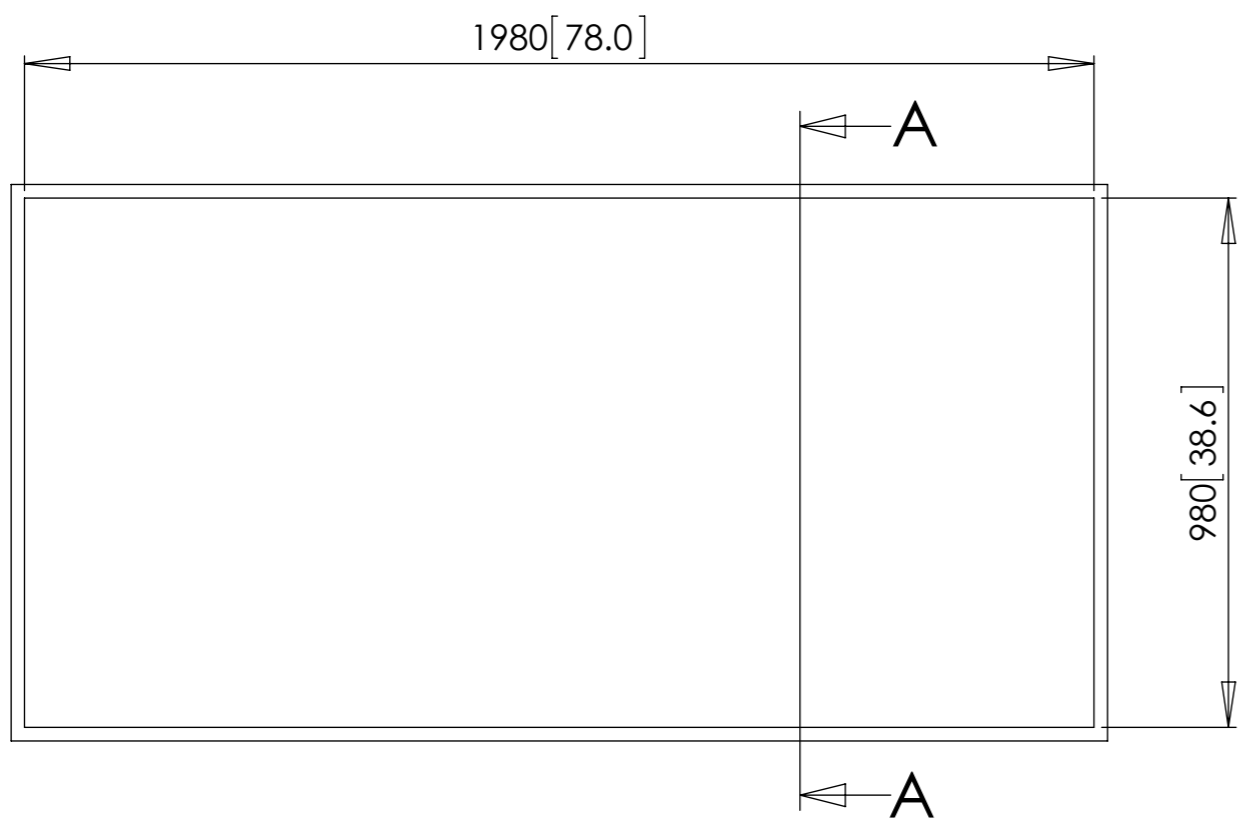
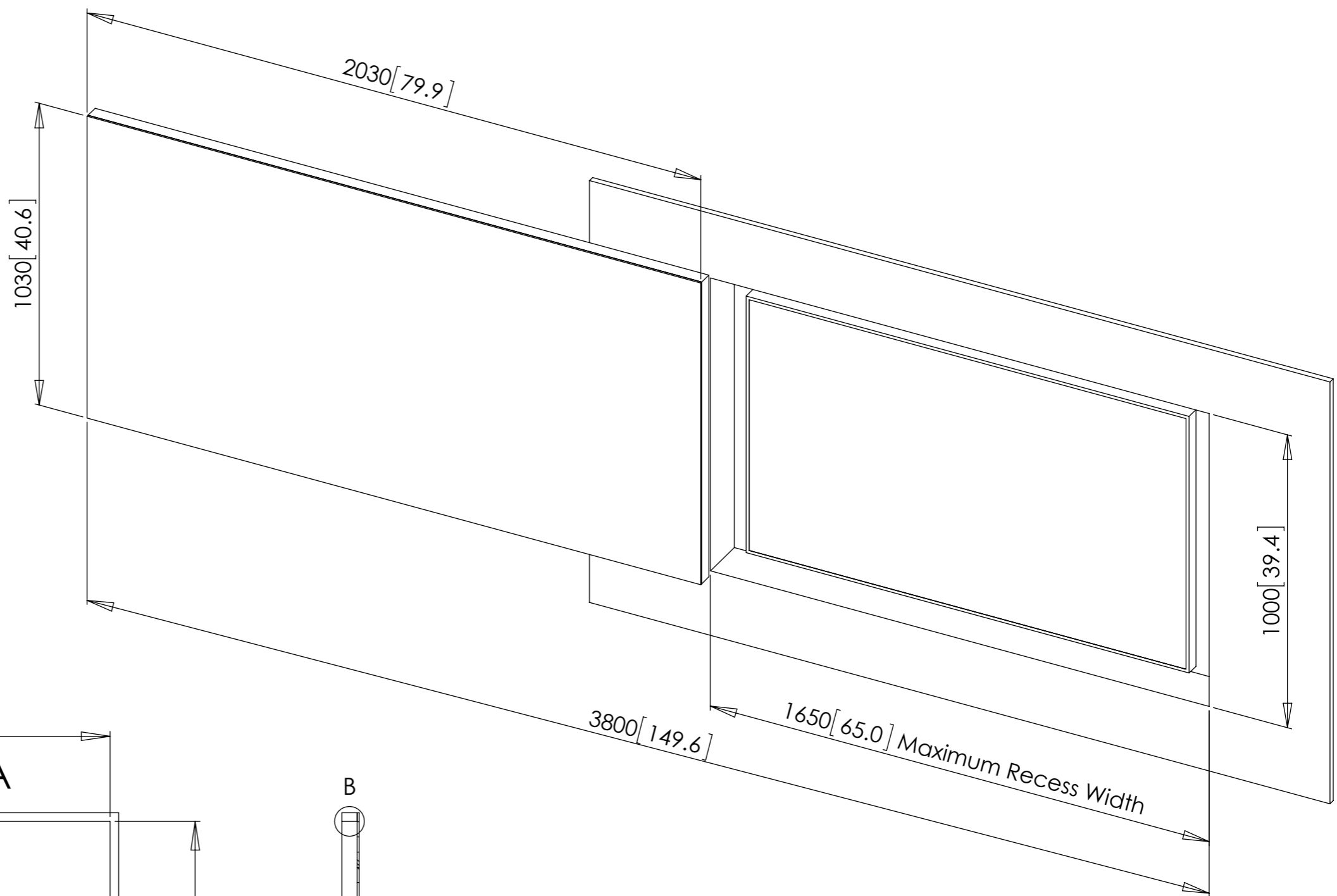
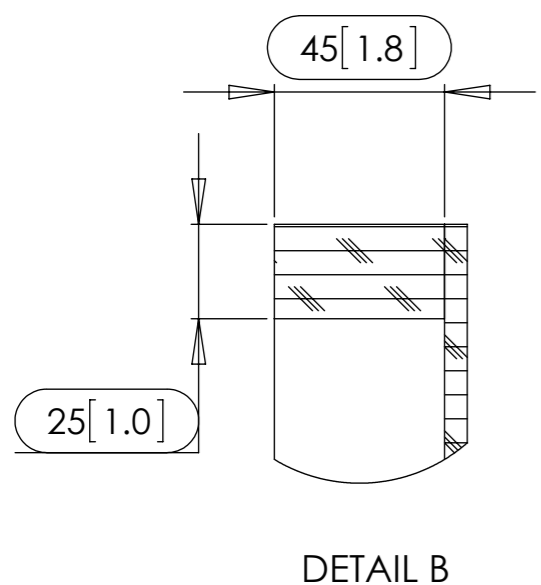


Cable exit/entry point

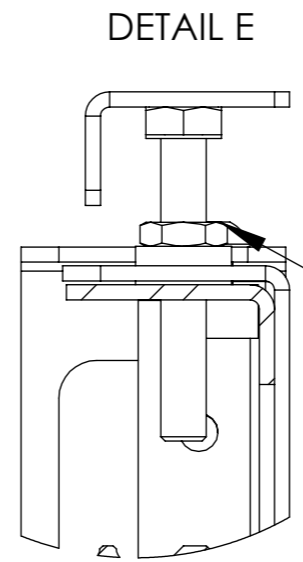
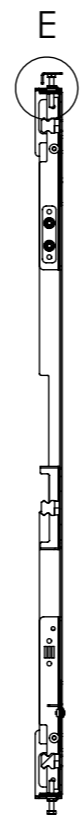
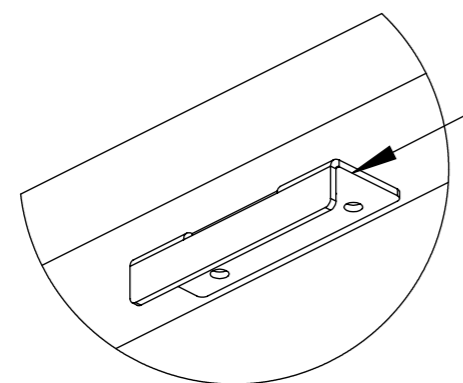
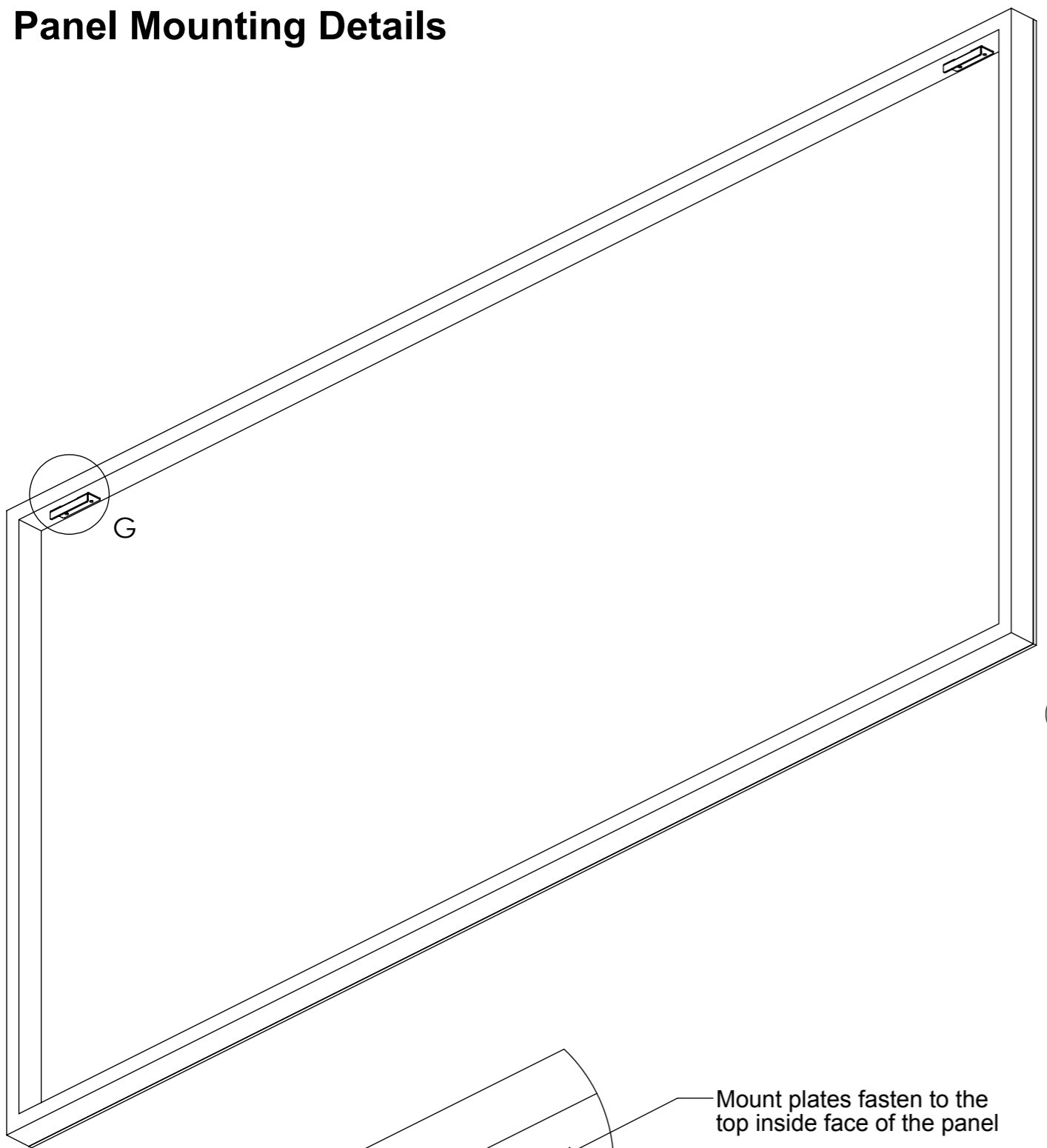


## Panel Details

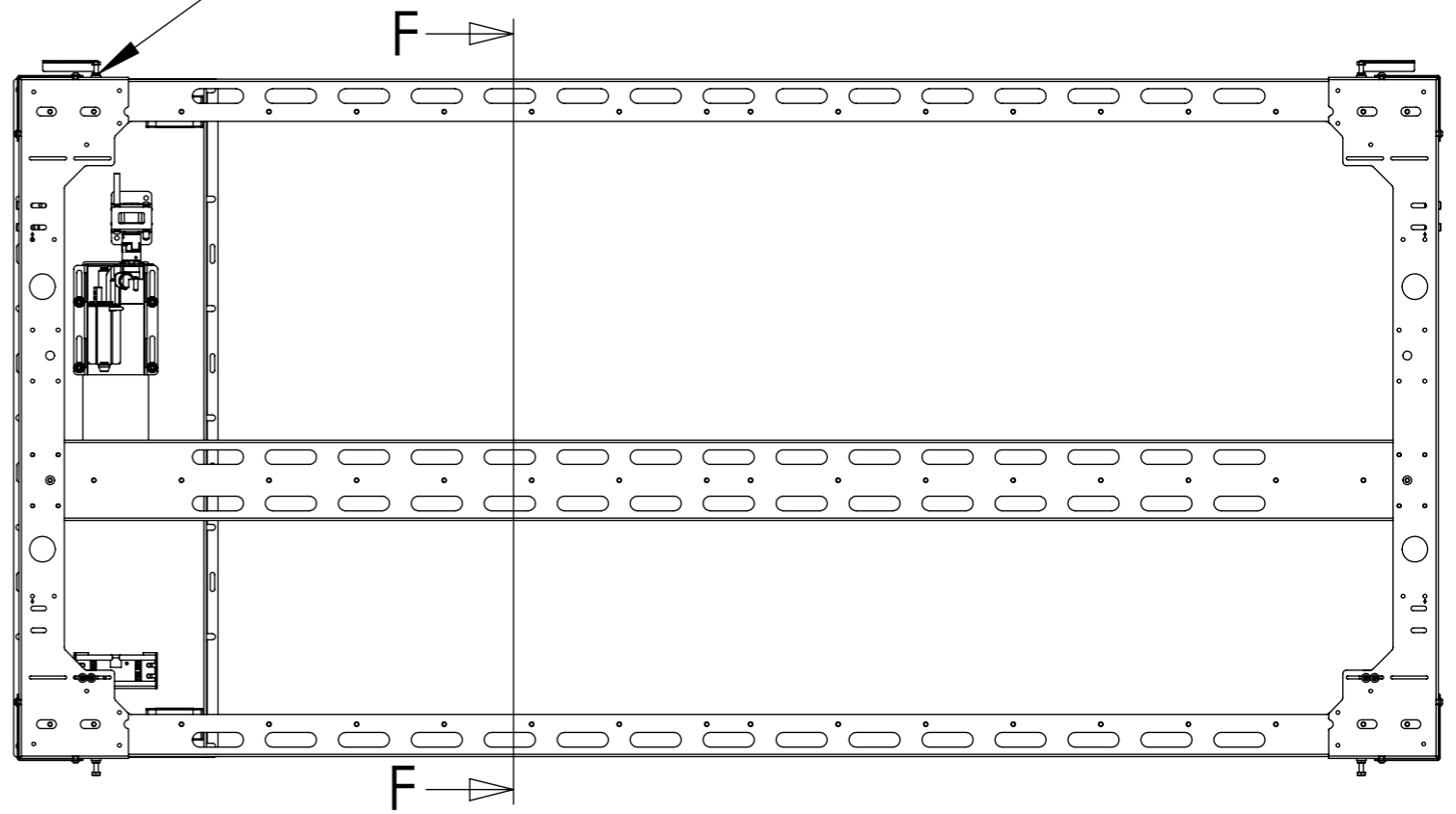
These are suggested dimensions for the panel.  
The panel must have an **internal depth of 45mm** to conceal the mechanism; as shown in DETAIL B.



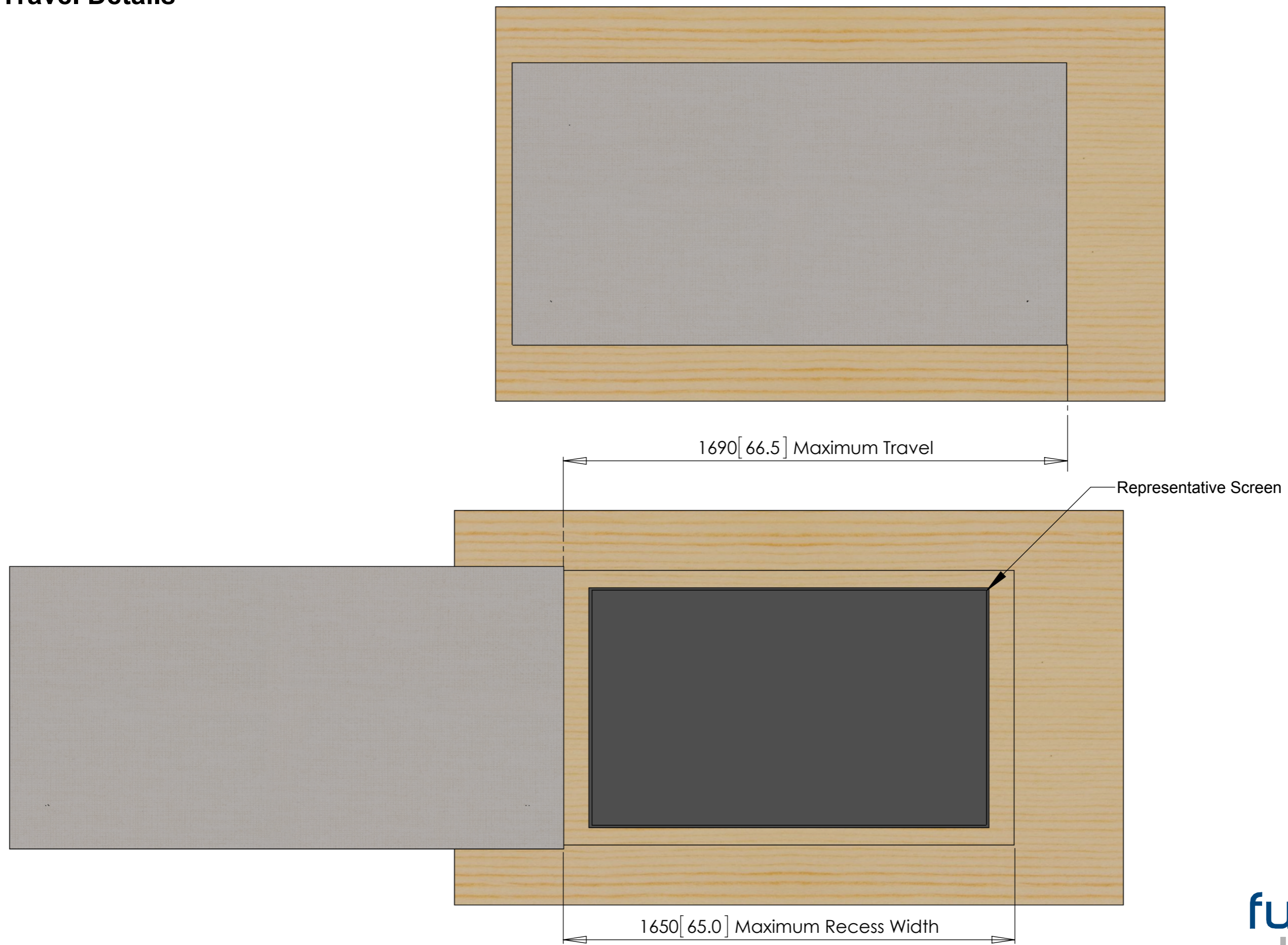
## Panel Mounting Details



Panel mount plates hook onto two bolts. The height of the bolts can be adjusted to ensure the panel is level.



## Panel Travel Details



## Mounting Details

These are suggested dimensions for positioning the mechanisms on the wall. The dimensions are based around the panel size stated on **Page 3**.

